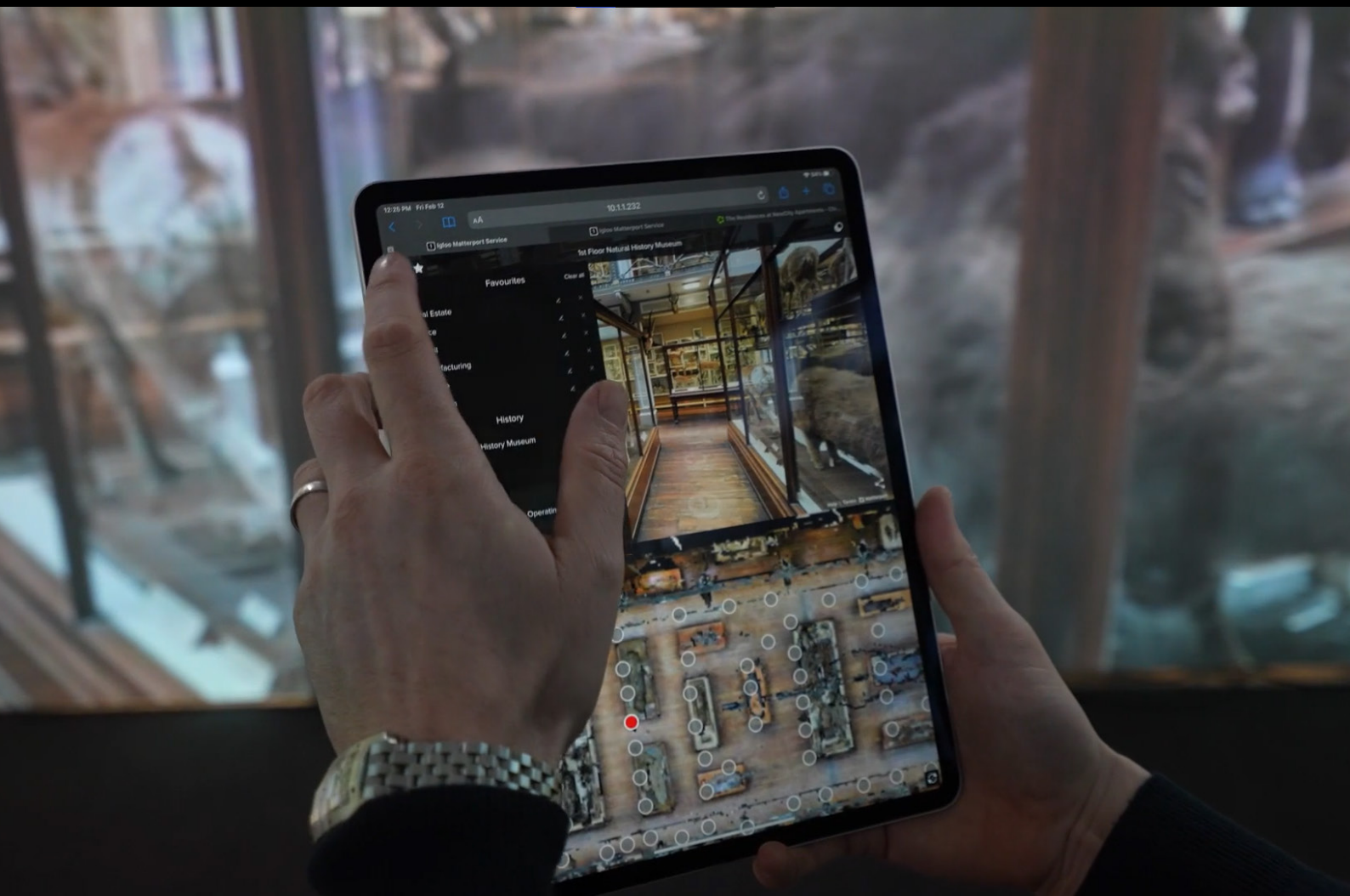




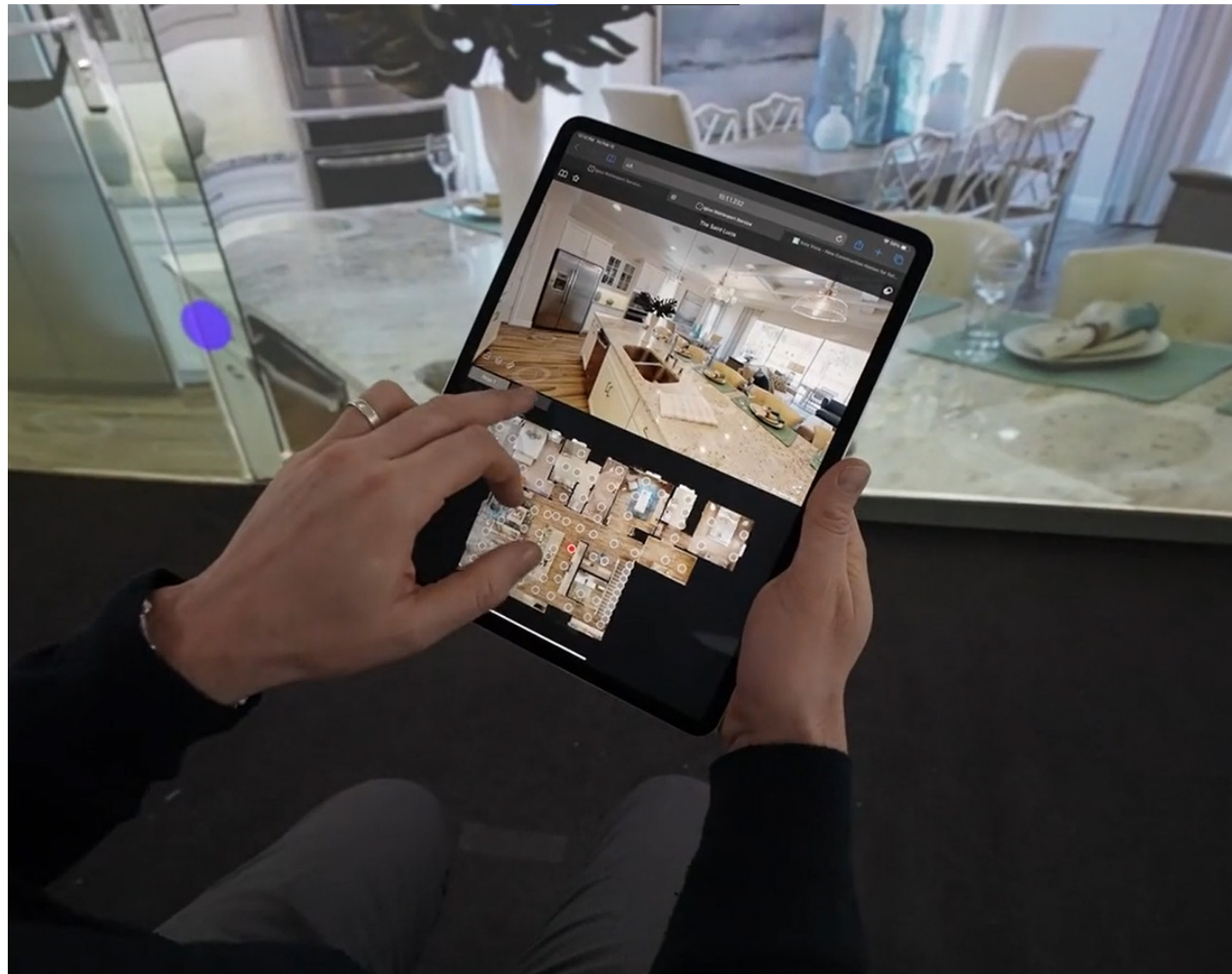
Matterport in Igloo Shared VR - a new way
to step inside any Matterport model



Works with  **Matterport™**

What is it?

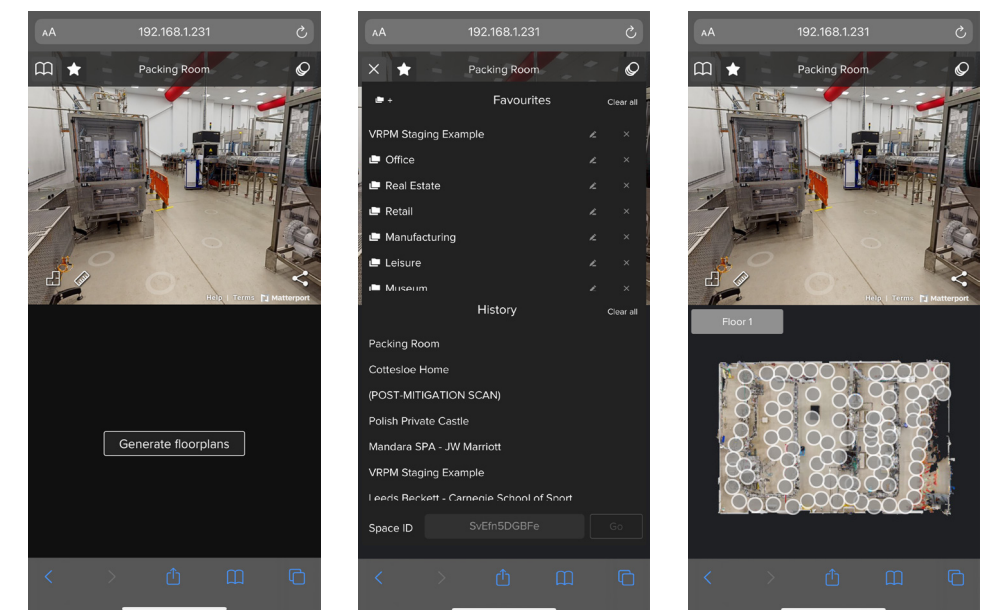
With Igloo Vision's new Matterport integration, built with the Matterport SDK, you can now get all the functionality of Matterport in a shared immersive space.



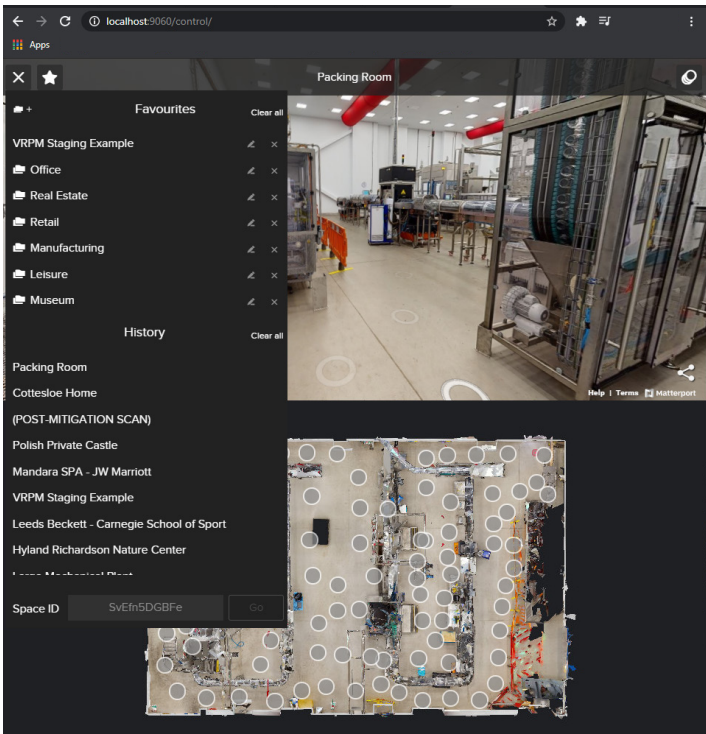
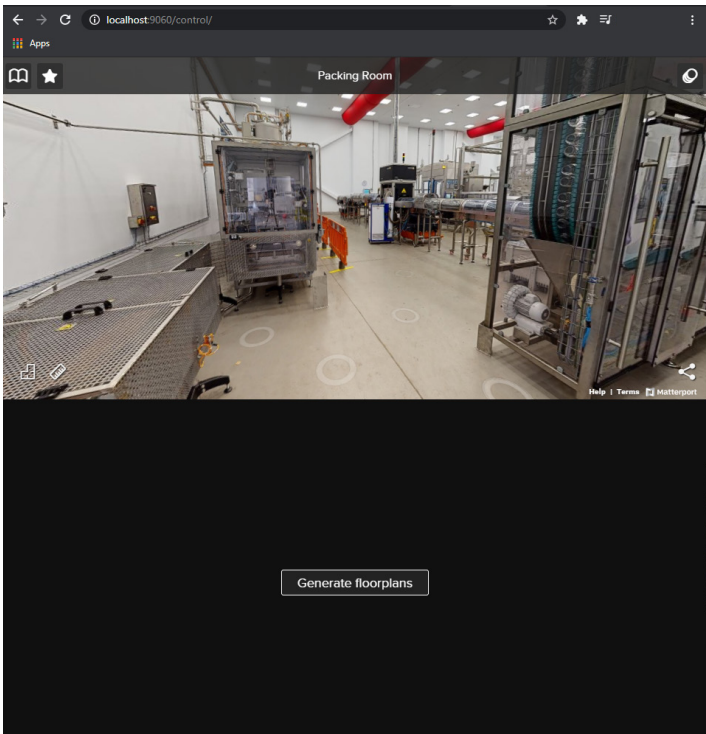
We've created a dedicated app that you can access via a web browser on a smartphone, tablet, or computer that's connected to an Igloo.

Normally, you'd view Matterport on a flat screen (like a smartphone, a tablet, or a computer monitor), and only see a section of the model.

With Igloo, you can step inside a Matterport model and be immersed in it. It's as close as you can get to really being there.



What can you do with it? You can...



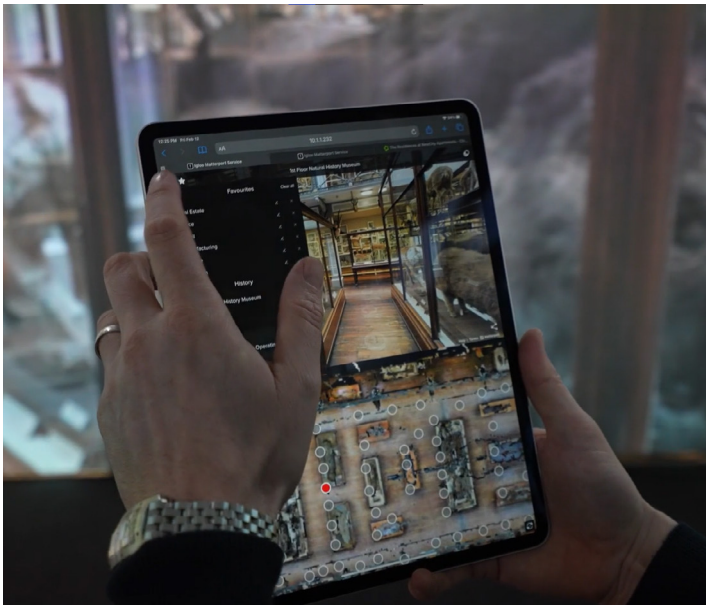
- 1

Generate the Matterport floorplan in the app - so you can see, at a glance, the whole space and transport anywhere within the model with one touch.
- 2

Navigate the model using our **Igloo Touch** app - you can easily point and click where you'd like to go.
- 3

Create a list of **Bookmarks** to quickly access your favourite Matterports. Use the **History** feature to easily revisit any model.
- 4

View and interact with **Mattertags™** that call out and highlight features of the space.



Plus, you can easily bring up any Matterport hosted on any website in an Igloo:

- Access the website on the device you are using to control the Igloo
- Next, select the Matterport you want to view
- Then, you select the Igloo Matterport app from your browser bookmarks
- This will seamlessly bring up the chosen Matterport in the Igloo

This is especially useful for anyone with their own platform that hosts Matterport models.

You don't need to separately build a database for accessing the models in an Igloo. Instead, you can do it directly from your website.

Who will this be useful for?

Anyone who works with Matterport models can benefit from this new integration



We've listed just a few use cases below:

- Imagine you're working in **real estate** - you could bring in your clients to an Igloo and guide them through a whole catalogue of properties quickly and easily, and they can be fully immersed in the model.
- It's great for **education** too - you could transport your whole class to a museum, or gallery, without leaving the classroom.
- If you work in **facilities management**, or need to view digital twins - you could capture and create models with Matterport and then view them easily in an Igloo immersive space. Your teams can get inside, collaborate face-to-face, with models set free from a computer screen.
- For those in **architecture, engineering and construction**, you can bring teams right inside models of existing structures, review for updates or pre-planned maintenance, before any design begins, reducing the need for site visits.
- If you use Matterport for **induction training**, familiarisation or onboarding - you can take your people on a tour of your offices, or bring them up-to-speed on the details of a remote site they are about to visit.
- Maybe you're in the **travel industry** - you could give your customers a way to visit travel destinations and resorts they're interested in, before they hop on a plane.



How can I find
out more?

We'd love to explore the possibilities with you. You can find the app via the Matterport marketplace. Or, we can give you a demo of it working in an Igloo.

We can offer you a virtual demo. And with offices in the UK, USA, Canada and Australia, we can show you in-person too.

Just get in touch at www.igloovision.com